



May 2024

# SHIRE OF VICTORIA PLAINS

Please also see our user friendly website at <https://www.victoriaplains.wa.gov.au> or  
Follow us on Facebook

YOUR LOCAL COMMUNITY NEWSLETTER



# From the Shire President Pauline Bantock



During the month of April, Council conducted a couple of workshops.

The first was on standardised meeting procedures. As part of the State Government's reform of the Local Government Act, the Shire was asked to provide feedback to the Department of Local Government & West Australian Local Government Association, on standardising council and committee procedures. The State Government intends under section 5.33A to make Regulations that apply to council and committee meetings held by all local governments. Council adopted their position on the review questions and authorised the CEO to submit the response under item 9.4 of the April Ordinary Council Meeting.

Council also had the opportunity to review part of the council policy manual. As per the Local Government Act, Council cannot be involved in the administration of the Shire. Several parts of section 8 needed updating in this regard. A new version of the policies was produced, containing a number of Executive Directives that are delegated to the CEO. At the April Ordinary Council Meeting, we adopted Policy Manual 2024 Section 8 – Personnel.

ANZAC Day was highlight during April. I congratulate all individuals and groups who contributed to the day's success.

At the community level, April also gave us some hard times. I would like to sincerely thank the Victoria Plains Shire for arranging support services to the community that was affected by a traumatic shooting incident in Mogumber. The Department of Communities attended a Shire event at the local hall and brought along the Red Cross support services. Each individual will process trauma in their own way, and in times of anxiety, talking to support agencies can be a big help. While we never wish to experience this situation again, it has been so nice to see how the Community has rallied around each other during this time.

Take care of each other.

Kind Regards,  
**Cr. Pauline Bantock**  
Shire President

## Confidential Matters

When sending confidential matters to the Shire,  
please ensure emails are  
forwarded to

[reception@victoriaplains.wa.gov.au](mailto:reception@victoriaplains.wa.gov.au)

Labelled 'Private and Confidential'



## Ordinary Council Meeting

Will be held  
**Wednesday**

**22nd May 2024**

Commencing at 2:00pm in the  
Calingiri Council Chambers

## DIGITAL NEWSLETTER

Did you know the Shire offers digital  
copies of the Newsletter?

Simply email  
[reception@victoriaplains.wa.gov.au](mailto:reception@victoriaplains.wa.gov.au)  
to register for a digital copy.



# From the Chief Executive Officer

## Sean Fletcher



### **Hello from The CEO**

Much has happened over the last month, including the Anzac Day commemoration in Calingiri, the submission by the Shire to the Inquiry into Telecommunications in Regional Western Australia and ongoing work with DFES regarding the Shire's outstanding Flood Claim for the March 2021 flood event. The Shire has also been working on the AROC-Dandaragan Key Worker Housing Project (with myself as the project lead) and ongoing development regarding the Economic Development Strategy, along with the Tourism Plan and the development of resources to manage corellas.

### **Mogumber Community Support**

Linda's and my thoughts are with the Mogumber community and as it continues to come to grips with the recent shooting incident at the Mogumber Hub. I would like to say a very big thank you to the Red Cross, the Department of Communities and WA Police for being a part of the Mogumber Event held at the Mogumber Hall for the community. We are very glad that so many of the Mogumber Community were able to pop along to the event hosted by the Shire and not only catch up with each other but also talk to the representatives from the three support agencies that were there.

The Shire has continued to work with the Department of Communities regarding support tools, so please reach out to Katrina the Shire's community development officer should you need further information.

### **Emergency Water Supply – Gillingarra**

The Shire has been working with the Gillingarra Sport and Recreation Club and the Department of Water and Environment Regulation to address the recent failing of one of the two water tanks that form part of the Gillingarra Farmland Emergency Response Plan.

In essence, access to this water supply is compromised until such times as it can be replaced.

In the meantime, we are working on implementing a temporary solution and I am thankful to others out in the community who are helping farmers and locals gain access to water.

### **Inquiry into Regional Telecommunications in Western Australia**

The Shire made a submission to the State Parliament's Public Administration Committee regarding the status of telecommunications in regional Western Australia. The Inquiry is an opportunity to advise on what is happening to telecommunications in Victoria Plains which is not too dissimilar to what is happening in other districts throughout the regions. The Shire's submission addressed:

- **Mobile & Internet Infrastructure – Power Resiliency.** The January 2024 Storm Event highlighted how fragile the Shire's telecommunications are with the backup supplies for the mobile towers and landline exchanges failing;
- **Population Changes and Pressures – Encroachment** by the metropolitan outer area, the advent of mining and extensive exploration will put a strain on existing telecommunication services;
- **The Matter of Safety –** the frustration we experience we trying to call someone across different parts of the Shire, concerns re a lack of communications during a health or emergency event and the impact of failures on business and farming;
- **Automation –** including the ongoing rapid increase of farming mechanisation and other industry; and  
The need for faster upload speeds.

# Continued on from the Chief Executive Officer: Sean Fletcher

## AROC – Dandaragan Key Worker Housing Investigation Project

This project continues to grow with other local governments throughout the Wheatbelt joining this working group regarding key funding opportunities. So far, the Shire has applied for funding to develop a residential sub-division on Edmond Street in Calingiri. This will be a ten lot development that is aimed to not only assist the Shire with much needed staff housing but for other employers who are looking to do the same.

The funding programs that the Shire has accessed to date include the Housing Support Program. The Shire submitted an application under Stream 1 to pay for the technical or planning costs for the proposed sub-division. Six local governments are involved in this application including: Victoria Plains, Goomalling, Toodyay, Dandaragan, Moora and West Arthur. Stream 2 has now opened up and this is for the funding of headworks and other similar works. Both Narrogin and Lake Grace are joining the project at this point.

## Matters of the Environment

I am very pleased to advise that the new Environmental Sustainability Officer, Zenab Azam (or Zee as she likes to be called) has commenced work and is shared between the Shire of Toodyay and Victoria Plains. Zee's first task is to develop a biodiversity plan for the Shire, so she will be reaching out to the communities to help her do this. The biodiversity plan is a program that addresses threatened species and habitats and protecting the world in general that we live in. Toodyay and Victoria Plains received funding to help develop the plan.

## The Month Ahead

May will continue to be a busy month regarding the above and many other projects and services that the Shire is involved. In the meantime we will be keeping our eyes peeled regarding the handing down of the State and the Commonwealth budgets.

Kind Regards,  
**Sean Fletcher**  
Chief Executive Officer





---

## New grant opportunity!



**Climate-Smart Agriculture Program  
Small Grants Round 1**

This grant opportunity is being provided by the Department of Agriculture, Fisheries and Forestry.

The Small Grants will support farmers and land holders to adopt sustainable agriculture best practices, as well as facilitate and implement practice change. The grants will improve management of our natural resources and increase sustainable on-farm productivity and resilience to climate change.

Applications are now open and close 9:00 pm AEST on 4 June 2024.  
Find out more on [GrantConnect](#).

# From the Deputy Chief Executive Officer Colin Ashe



## Hello ratepayers and residents of the shire,

This month I'm not going to give a detailed update on the finances, just a quick summary to express that we are tracking okay and the usual challenges with funds we find at this time of financial year. As a local government we're not meant to hold a large surplus at this point but of course this is a fine line. Ultimately we have virtually completed the capital program and the forecast is only a couple of activities will be carried over into 24-25.

My focus this newsletter is the Biggest Morning Tea the shire will be hosting on the 23 May 24 at the Calingiri Hall. This event is to fund raise to make a difference for those impacted by Cancer and Every dollar raised through Australia's Biggest Morning Tea helps fund Cancer Council's life-saving research, prevention, support programs, and information. Last year 25,376 morning tea's were hosted and \$14.6 million raised.

There is a high probability that you have had a family member, friend or other relative that has been affected by Cancer and almost 1 in 2 Australians will be diagnosed with cancer before the age of 85 – that's a really staggering statistic.

Personally one of my family members is in breast cancer remission and a dear mate has been recently diagnosed with terminal cancer.

But I don't want to be morbid about this event – it's a time to celebrate what we do have, appreciate our friends and family and get behind this cause. I'm particularly targeting the shire males to get off their tractors and farm for an hour and come and support this event. I know it is an important time in the farming calendar but given the statistics if there is no legacy, what's the point.

The event will be catered for and whilst not mandatory, a gold coin donation is encouraged.

I look forward to seeing a large turnout from the shire - I know there will be a good turn out from the females but also hope to see a large contingency of males showing their support for this worthwhile cause.

Kind Regards,  
**Colin Ashe**  
Deputy Chief Executive Officer



# From the Manager Works and Services

## Silvio Brenzi



The final piece of signage has been installed on each side of the Calingiri Cemetery entry walls. These were locally made and depict Carnaby's from our region.



Mogumber Hall toilets have also had some work done with the removal of the old tank and stand that had reached the end of its life. The plumbing has been altered to suit.

General road maintenance grading on school bus routes is underway on unsealed roads. Once completed other roads will continue to be worked on.

Some roads are also being cleared of tree overhang, as some additional funds became available. Once these have been worked on and additional LRCI funding becomes available, we shall continue on Old Plains Rd.



The Works and Services team are developing the next financial years budget in conjunction with other departments. This includes requested items, plant replacement and road projects. These will be submitted for the draft annual budget for 24/25.

Kind regards,  
**Silvio Brenzi**  
Manager - Works and Services

# From the Community Development Officer Katrina Humphries



The month of April has been a busy one for me with many grants submitted, numerous community projects being worked on, community events attended and so much more.

The Shire is still busy working with the Consultants on the Sport and Recreation Management Plan, Economic Development Plan and now soon we will be working on a Strategic Water Plan for the whole of the shire. We have been advised that the Shire has been successful with a grant submission to the Department of Water and Environmental Regulation – Community Water Supplies Program. This grant project was aimed at contracting a consultant who can map out existing infrastructure within the shire, identify water hotspots and potential water sources and the type of infrastructure required for the future to name a few things.

Anzac Day Ceremony was held on the 25<sup>th</sup> of April in Calingiri. Big thanks to Gary McGill, the Anzac Warden, for organizing the Anzac Ceremony and giving the Shire residents the chance to pay their respects to and remember those who lost their lives in War. To all those who assisted in the preparation of the ceremony and/or on the day, thank you for your time and efforts. The ceremony was supported by the Airforce Flypast Team with 1 x Hawk Fighter Jet.

The Biggest Morning Tea is being held in conjunction with Thank A Volunteer Day. We are holding both of these events at the same time and would love for as many residents within our Shire to attend this event. The Biggest Morning Tea is to help Cancer Council raise funds to go towards not only cancer research, but also to help those families that are currently living with Cancer.

Thank A Volunteer Day is all about recognizing, acknowledging, and showing our thanks to the many local volunteers we have within the Shire who all work tirelessly on numerous committees for Sporting, Community Groups, Emergency Services, etc. The Shire will be providing a light morning tea and refreshments for this event. The morning tea will be held on the 23<sup>rd</sup> of May at 9:30am at the Calingiri Hall.

The Shire held a community get together at the Mogumber Hall on the 30<sup>th</sup> of April for those that were indirectly and directly affected by the incident that occurred in Mogumber on the 19<sup>th</sup> of April. Representatives from Department of Communities, Australian Red Cross Services and the Gingin Police were able to attend our community afternoon to show their support for the residents and provide advice on different support services to reach out to and to just listen to those that needed to talk. Just remember, we are all affected by incidents and situations in our life differently. Please reach out to someone whether that be a friend, family member, work colleague or a registered support service if you feel the need to talk.

Kind Regards,  
**Katrina Humphries**  
Community Development Officer



# From the Emergency Management Officer Mikayla James



Hello! My name's Mikayla, and I'm the Shire's new Emergency Management Officer. I live in Moora and have a background in Paramedicine and volunteering with my local fire brigade, so I'm hoping to bring my experience and knowledge to the role and I'm excited to be taking on this position and hope I can make a positive impact with my work on the community.

In terms of current happenings, we are in the process of reviewing and updating the Shire of Victoria Plains Local Emergency Management Arrangements (LEMA). The LEMA is a document which contains emergency management strategies, plans, agreements, and other knowledge relevant to the community. In an emergency, we use this document and the knowledge it contains to help plan for the situation and to provide support and resources. It ensures that we can look after the community and bolster everyone's resilience and readiness for emergencies- so it's quite exciting and very important to regularly review and update!

We're also in the unrestricted burning period. Please make sure you're burning responsibly and safely. If your fire gets out of control, please phone 000.

Kind Regards,  
**Mikayla James**  
Emergency Management Officer



**YERECOIN TRADERS**  
Your Local Store

YT MOTHER'S DAY

**PLANT SALE**

SATURDAY 11TH MAY



OFFICE FURNITURE

# SILENT AUCTION

FRIDAY 24TH MAY AT THE  
SHIRE DEPOT 9AM - 12NOON



**DESKS**

**FILING CABINETS**

**SHELVES**

**DRAWERS**

**CUPBOARDS**

24<sup>th</sup> April 2024

SQM Australia Pty Ltd. wishes to advise local residents of an Airborne Geophysical Survey expected to take place within the Shire of Victoria Plains and a small part of the Shire of Chittering.

The survey will be completed by MagSpec Airborne Surveys, commissioned by SQM Australia, over granted Exploration Licences at the end of May and into June 2024.

Figure 1 indicates the area where the survey will be conducted and may include parts of, or all of your property. The survey is anticipated to last up to a total four weeks, depending on local weather conditions and contractor regulations, however each property will only be affected for a few days.

All surveying will be undertaken in line with Civil Aviation Safety Authority (CASA) regulations. Flights will only be undertaken during daylight hours. Aircraft will not land or contact private properties. Surveying will use a small, light aircraft, similar to a Cessna 210. The survey will be flown at a height of approximately 40m from the ground (except over buildings and vehicles where flight height will be elevated), in a grid pattern with line spacing of approximately 50m.

The survey records variations in magnetic fields, and the aircraft is not fitted with any cameras or video recorders. No imagery of your property and any residences/buildings will be taken.

The aircraft will generate noise, which you may hear for short periods while the aircraft completes lines in the close vicinity of your property. Other than aircraft noise, the survey will not have any significant impact on the surrounds. The aircraft will not fly directly over groups of livestock in yards and will avoid stock concentrations at watering points, yards, and sheds. The aircraft will increase flying height over houses, buildings, and vehicles before descending back to survey height to continue the program.

If you have any concerns or questions about the airborne survey, please contact the SQM Australia Office on (08) 6333 0626 or via email to [aus.contact@sqm.com](mailto:aus.contact@sqm.com)

The Association of Mining and Exploration Company (AMEC) has also prepared an information sheet which provides further information on minerals exploration and the methods used. A link is provided below.

<https://amec.org.au/wp-content/uploads/2023/05/2102-AMEC-NSW-NSW-Fact-sheet-EXPLORATION-METHODS-FINAL.pdf>

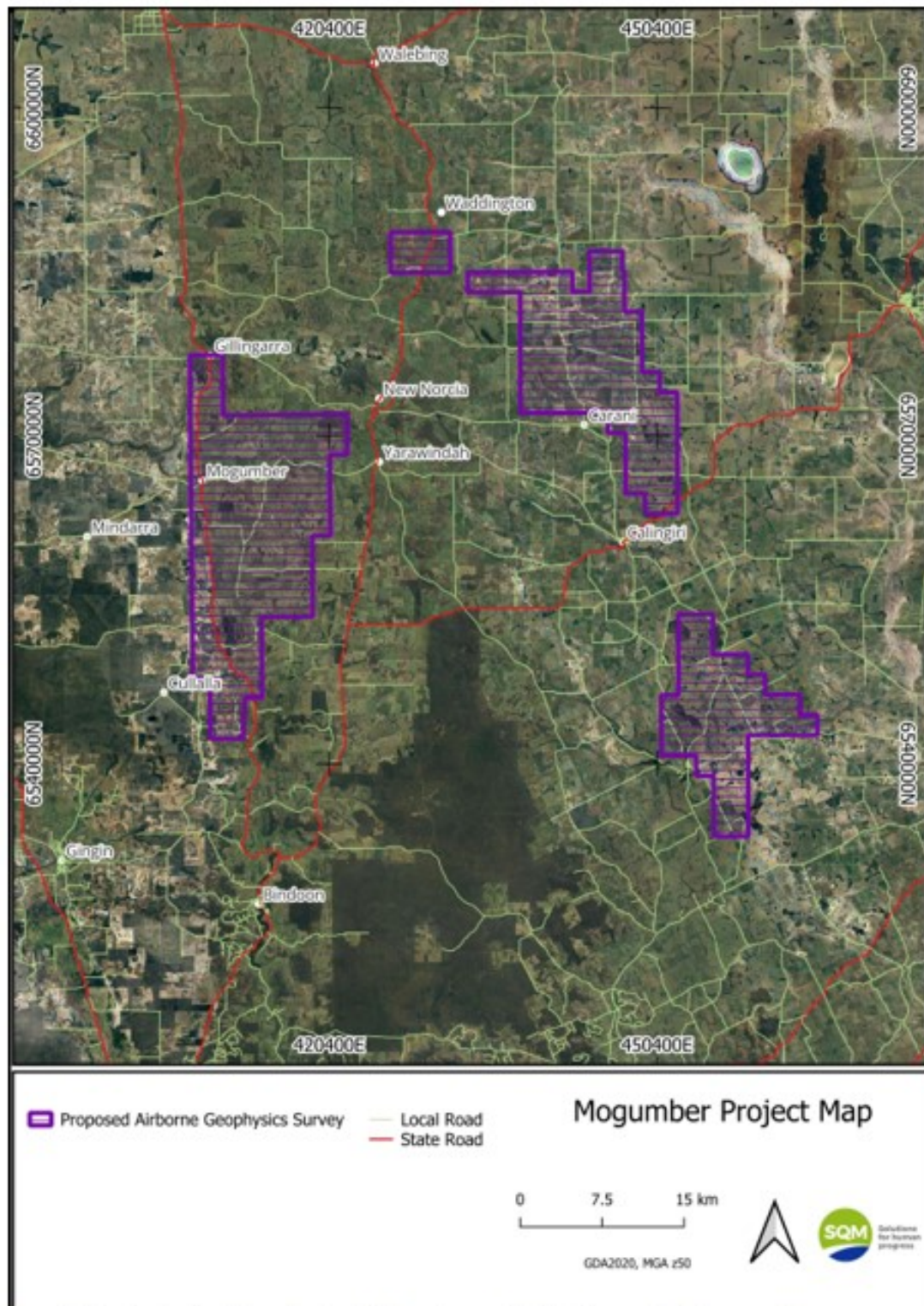


Figure 1: Map showing the Airborne Geophysical Survey Area, scheduled to be completed between end-May 2024 and mid-June 2024.

# STATE GOVERNMENT BAN ON E-WASTE

The State Government made an election commitment to deliver a state-wide ban on e-waste disposal to landfill by 2024, to improve the management and recycling of the e-waste that we produce.

On 1 July 2024, Western Australia will implement that ban. Items must not be disposed of to landfill, which means they should not be placed into your household bins or be deposited into the trenches at the Shire's landfills.

The Shire is in the process of erecting drop-off points at each landfill so that you will be able to deliver any of the above items for recycling or correct treatment and disposal.

Items banned included those covered under national product stewardship schemes, or with material recovery pathways available as an alternative to landfill such as:

**Televisions**  
**mobile phones**  
**computers and laptops**  
**screens**  
**fridges**  
**air conditioners**  
**medical devices**  
**lighting**  
**all batteries**



Further information on the ban can be found at <https://www.wa.gov.au/service/building-utilities-and-essential-services/waste-management/e-waste-landfill-ban-wa>.

## NEWSLETTER SUBMISSION CUTOFF



Newsletter submissions are due by 4:00 pm on the last Friday of the month.

All submissions to be emailed to:  
[candice.watson@victoriaplains.wa.gov.au](mailto:candice.watson@victoriaplains.wa.gov.au)

Late submissions may not be accepted.



**Raising Healthy Minds**

## Do you have a question about your child's emotions, behaviours and wellbeing?

The Raising Healthy Minds app is a FREE, personalised pocket resource to help you raise confident, resilient children.

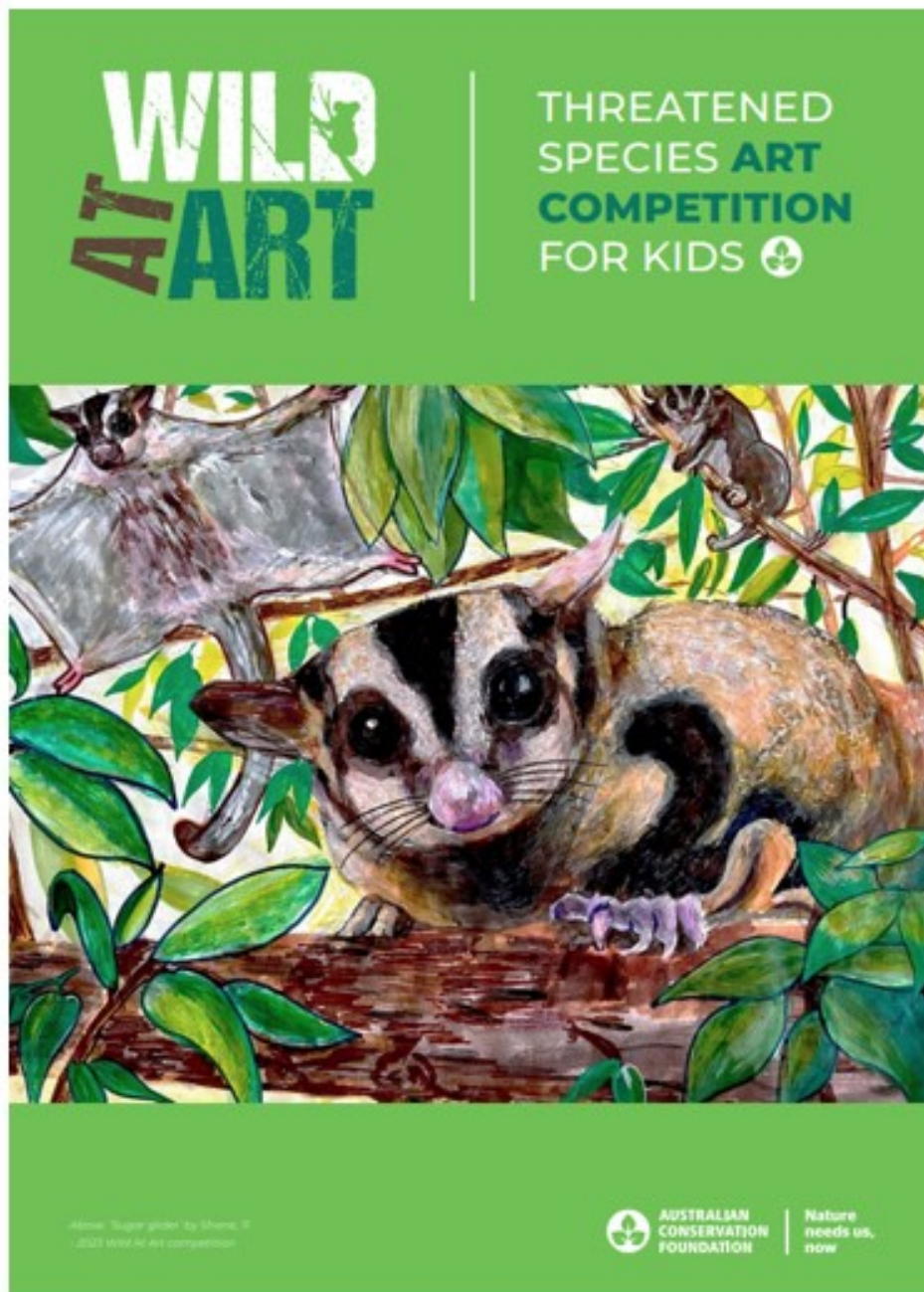
Co-designed with parents and experts and funded by the Australian Government, the app offers a mix of quick-read articles, videos and animations designed to support your child's social and emotional wellbeing from birth to age 12.



Download the app from Google Play or the App Store



Find out more about Raising Healthy Minds at [raisingchildren.net.au/rhm](https://raisingchildren.net.au/rhm)



Looking for a creative way to teach children about Australia's unique plants and animals and the need to protect them? The [Australian Conservation Foundation's Wild At Art threatened species art competition](https://www.acf.org.au/wild-at-art-competition) is kicking off again from 17 June - 12 August! 🦘

More than just a competition, this is an opportunity for students aged 5-12 to unleash their artistic creativity while learning about Australia's threatened animals and plants and the dangers they face.

#### Entering Wild At Art is easy:

1. Research threatened animals and plants in Australia, then choose one to represent.
2. Children create their own work of art that interprets the chosen animal or plant within the categories of drawing, painting or mixed media (such as collage).
3. Children write a short reflection about why they chose this animal or plant.
4. Have an adult help them submit their artwork.

Together, let's give kids a platform to raise greater awareness of Australia's threatened species and demand the protection and restoration of our unique and wonderful habitats.

For more information, visit [www.acf.org.au/wild-at-art-competition](https://www.acf.org.au/wild-at-art-competition) or email [wildatart@acf.org.au](mailto:wildatart@acf.org.au)



# WHAT'S ON AT CPS

Phone: 96288 500 - Email: Calingiri.ps@education.wa.edu.au - Address: 18 Cavell Street Calingiri

## ANZAC DAY

We hosted an ANZAC assembly on Wednesday 24th April where we recognised Indigenous Service in the First World War. We learnt about Corporal Gordon Charles Naley, Sister Marion Leane Smith & Driver Charles Burns. Thank you to all the parents and families that attending our service.



**WE ARE  
HERE**



## CAL TO KAL

The students are walking to Kalgoorlie. Every morning we have walking/running club, where students complete laps to make our way to Kalgoorlie. They are making great progress so far.

Total Distance = 555kms

Distance Walked = 156.6kms



# Yerecoin Primary School

## ANZAC School Service

Mr Brian Donnellan, long serving member of the Wongan Hills RSL attended our special ANZAC school service on Friday, 26th April 2024.

Students conducted the ceremony, lay wreaths and formed a guard of honour for our special ANZAC guest.





# ANZAC Day 2024



Students from Bolgart PS represented our school at the Shire of Victoria Plains ANZAC Ceremony, held in Calingiri at the Shire War Memorial on Thursday 25<sup>th</sup> April. Students wore their uniforms and sang along to 'Spirit of the ANZACs' by Lee Kernaghan along with other Shire community members. Representatives from our school also laid a wreath. Thank you to those parents and students who took time out of their public holiday to attend. We hope you enjoyed having a look at our ANZAC artwork that we completed and displayed in the Town Hall for the event.



# Photos Needed



---

Have you taken any photos within the Shire and would like them to feature on the front page of our newsletter?

---

Forward photos to [candice.watson@victoriaplains.wa.gov.au](mailto:candice.watson@victoriaplains.wa.gov.au)

## Contact Main Roads

Our team is available 24/7 to help you with any questions you have or information you may need regarding our road network. You can call us on 138 138

<https://www.mainroads.wa.gov.au/contact-us/>





Department of  
Education

# The WA Student Assistance Payment

Helping you get  
the things you need  
for your kids.

---

## \$150

For each Kindergarten  
and primary school student

---

## \$250

For each secondary  
school student

---

If you have kids enrolled in school you can claim the WA Student Assistance Payment.

## Claim now

You can submit a claim:

- on the ServiceWA app on your mobile phone
- online
- by filling out and posting in a paper form
- asking for help at your school.

Go to [education.wa.edu.au/wasap](https://education.wa.edu.au/wasap) for more information.

## You will need:

1. The 8-digit WA student number (WASN) for each student.

You'll find it on:

- school reports
- previous NAPLAN results
- secondary student's SmartRider

If you have trouble locating the number, contact your school for help.

2. Details of each student you are claiming for:

- name at time of enrolment
- date of birth
- school name
- year level.

3. The details of your bank account where the payment will be deposited.

Submit your claim between  
Monday 15 April and Friday  
28 June 2024.

For more information about the WA Student Assistance Payment eligibility and how to claim, go to [education.wa.edu.au/wasap](https://education.wa.edu.au/wasap)

Claim on the  
ServiceWA app





# Australia's **Biggest Morning Tea**

**Every dollar raised helps support  
those impacted by cancer.**

**When:** 23rd of May 2024

**Where:** Calingiri Hall, Yulgering Road, Calingiri

**Time:** 9:30am

**Details:** The Shire of Victoria Plains will be hosting Australia's  
Biggest Morning Tea this year. The event will be gold coin  
donation on entry and all money raised will be going to  
Cancer Council to aid in research to help fight against cancer.

[biggestmorningtea.com.au](http://biggestmorningtea.com.au)

Please donate to my morning tea



Scan the QR code to donate.

You will be directed to my fundraising page where  
you can donate directly to my morning tea.



National 20-26 MAY 2024  
**Volunteer**  
Something for Everyone **Week**

---

YOU'RE INVITED

---

**Shire of Victoria Plains**  
**Thank a Volunteer**  
**Morning Tea**

Where: Calingiri Hall, Yulgering Road,  
Calingiri

Date: 23rd of May 2024

Time: 9:30am

National Volunteer Week 2024 Sponsor

**AON**

  
**Volunteering**  
AUSTRALIA

# “Now Open”

## Community Grant Submissions 2024/2025

Each year the Shire of Victoria Plains requests submissions from the Community and Sporting clubs for Council funding of projects for the following financial year. An annual budget allocation of \$40,000 will be made for community grants, capped to a maximum of \$5,000 for any one project. Submissions must include full details of the proposal and include accurate assessments of cost as well as the commencement and completion dates. Council will consider all applications and make an assessment on a deemed priority basis. For more information, please refer to the below Submission Guidelines.

For the guidelines and submission form please head to the shire website <https://www.victoriaplains.wa.gov.au>

Submissions must be received by the Shire of Victoria Plains by: **4pm Monday 10<sup>th</sup> of June 2024.**



To all the mothers in our community Happy Mothers Day from the Shire of Victoria Plains

## Local Containers for Change Member numbers accepting donations



- Calingiri Primary School P&C Association—C10344336
- Yerecoin Primary School P&C Association—C10283746
- Bolgart Primary School P&C Association—C10324137
- Mogumber Outback Club—C10671492
- Gillingarra Sport & Recreation Club—C10291910
- Calingiri Sports Club—C10232342
- Mogumber & Districts Progress Association Inc - C10480955
- Calingiri Progress Association - C10399453
- Piawaning Expo Inc - C11085061

If you would like your group to be included on this list please email [reception@victoriaplains.wa.gov.au](mailto:reception@victoriaplains.wa.gov.au)

## Updates from your local St John WA Sub Centre

### Request for Volunteers to wash the New Norcia Ambulance

Join our community effort to keep the New Norcia ambulance sparkling clean! We're seeking a dedicated volunteer to ensure the ambulance receives regular washing, especially during the winter months. If you're passionate about lending a hand and supporting your community, we'd love to hear from you. Contact Sarah Mason at 0459 212 780 or email [sarah@carrah.com.au](mailto:sarah@carrah.com.au) to get involved today!

### Check your St John WA Country Ambulance Cover

We've revamped our membership renewal process to better serve you! Take a moment to ensure your St. John Ambulance Country Membership is current. If it's time for a renewal or you need assistance, don't hesitate to reach out. Please contact us at (08) 9621 1613 or email [victoriaplains.subcentre@stjohnwa.com.au](mailto:victoriaplains.subcentre@stjohnwa.com.au).

Ready to make a difference?

 St John Volunteer

## Personal Support Services

There are personal support services available to you

 Government of Western Australia  
Department of Communities

<p><b>Here For You</b></p> <p>For anyone concerned about their own or another's mental health.</p> <p>PH:1800 437 348</p> 	<p><b>Rural Link</b></p> <p>Afterhours service for people in rural WA experiencing a mental health crisis</p> <p>PH:1800 552 002</p>  	<p><b>13 Yarn</b></p> <p>Counselling for Aboriginal and Torres Strait Islander people</p> <p>PH:13 92 76</p>  	<p><b>24-Hour Mental Health Services</b></p> <p><b>Lifeline</b> Anyone experiencing a personal crisis 13 11 14</p> <p><b>Beyond Blue</b> Anyone feeling anxious or depressed 1300 224 636</p> <p><b>Kids Helpline</b> Counselling for people aged 5 to 25 1800 551 800</p> <p><b>MensLine Australia</b> Men with emotional concerns 1300 789 978</p> <p><b>Mental Health Emergency Response Line</b> Mental health emergencies 1300 555 788</p> <p><b>Suicide Call Back Service</b> Anyone with concerns involving suicide 1300 659 467</p> <p><b>Open Arms</b> Veterans and families counselling 1800 011 007</p>
<p><b>Regional Mens Health</b></p> <p>Support for Men in Regional WA</p> <p>PH: 9690 2277</p> 	<p><b>HolyOake</b></p> <p>Counselling Services In person, phone and video counselling.</p> <p>Freecall:1800 447 172</p> 	<p><b>Women's Helpline</b></p> <p>Helpline providing support for women with or without children experiencing domestic violence.</p> <p>1800 737 732</p>  	
<p><b>Key</b></p> <p> » Emergency Contact</p> <p> » Mental Health/Wellbeing</p> <p> » 24-hour service</p>	<p><b>Moora Hospital (WA COUNTRY HEALTH SERVICES)</b></p> <p>24/7 Emergency Department</p> <p>9651 0222 Dandaragan &amp; Kintore Street, Moora</p>   	<p><b>Wheatbelt GP Network – Northam</b></p> <p>Services provided: A range of child, youth, adult and family counselling services</p> <p>9621 4444 <a href="http://www.wheatbelt.com.au">www.wheatbelt.com.au</a></p> 	



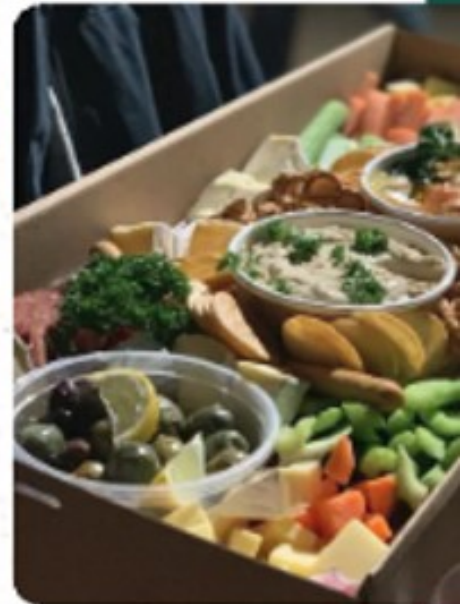
# YERECOIN TRADERS

*Little Country Store & Café*

38 Milling Rd,  
Yerecoin WA 6571

(08) 9654 6015

**Open Monday - Friday: 7am-5pm Saturday: 8am-12pm**



*The best food and coffee in town!*

Coffee • Lunch • Catering • Meals2Go • Venue hire  
Our famous Saturday breakfast • Fully licensed  
YT App • And much more!

**Fancy a \$10 store voucher?**

Sign up here! →



© @yerecointraders 📍 Yerecoin Traders 🌐 yerecointraders.com.au